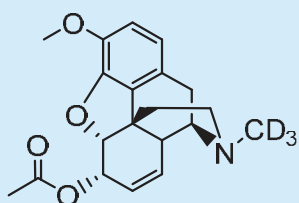


6-Acetylcodeine.HCl

$C_{20}H_{23}NO_4 \cdot HCl$ M.W.: 341.41 + 36.46

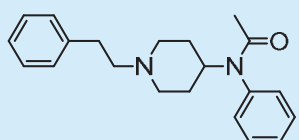
C-46-HC-1LA	1.0 mg base/1 ml	calibrated solution in acetonitrile
C-46-HC-1	1.0 mg base	calibrated powder
C-46-HC-10	10 mg	powder
C-46-HC-50	50 mg	powder
C-46-HC-100	100 mg	powder



6-Acetylcodeine-D₃.HCl

$C_{20}H_{20}D_3NO_4 \cdot HCl$ M.W.: 344.43 + 36.46

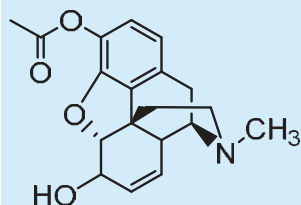
C-49-HC-0.1LA	0.1 mg base/1 ml	calibrated solution in acetonitrile
C-49-HC-1LA	1.0 mg base/1 ml	calibrated solution in acetonitrile
C-49-HC-1	1.0 mg base	calibrated powder
C-49-HC-10	10 mg	powder
C-49-HC-50	50 mg	powder
C-49-HC-100	100 mg	powder



Acetylfentanyl.HCl

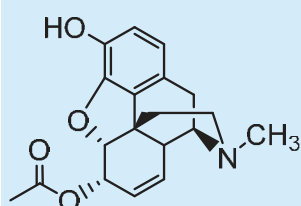
$C_{21}H_{26}N_2O \cdot HCl$ M.W.: 322.45 + 36.46

FEN-1572-HC-1LM	1.0 mg base/1 ml	calibrated solution in methanol
FEN-1572-HC-1	1.0 mg base	calibrated powder
FEN-1572-HC-10	10 mg	powder
FEN-1572-HC-50	50 mg	powder
FEN-1572-HC-100	100 mg	powder


3-Acetylmorphine.amidosulfonate
 $C_{19}H_{21}NO_4 \cdot NH_2SO_3H$

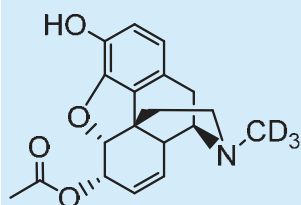
M.W.: 327.38 + 97.09

M-56-AS-1LAH	1.0 mg base/1 ml	calibrated solution in acetonitrile:water (1:1)
M-56-AS-1	1.0 mg base	calibrated powder
M-56-AS-10	10 mg	powder
M-56-AS-50	50 mg	powder
M-56-AS-100	100 mg	powder


6-Acetylmorphine.HCl
 $C_{19}H_{21}NO_4 \cdot HCl$

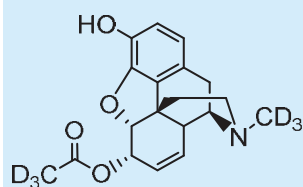
M.W.: 327.38 + 36.46

M-43-HC-1LM	1.0 mg base/1 ml	calibrated solution in methanol
M-43-HC-1	1.0 mg base	calibrated powder
M-43-HC-10	10 mg	powder
M-43-HC-50	50 mg	powder
M-43-HC-100	100 mg	powder


6-Acetylmorphine-D₃.HCl
 $C_{19}H_{18}D_3NO_4 \cdot HCl$

M.W.: 330.40 + 36.46

M-44-HC-0.1LM	0.1 mg base/1 ml	calibrated solution in methanol
M-44-HC-1LM	1.0 mg base/1 ml	calibrated solution in methanol
M-44-HC-1	1.0 mg base	calibrated powder
M-44-HC-10	10 mg	powder
M-44-HC-50	50 mg	powder
M-44-HC-100	100 mg	powder



6-Acetylmorphine-D₆.HCl

C₁₉H₁₅D₆NO₄.HCl

M.W.: 333.41 + 36.46

M-981-HC-0.1LM

0.1 mg base/1 ml

calibrated solution in
methanol

M-981-HC-1LM

1.0 mg base/1 ml

calibrated solution in
methanol

M-981-HC-1

1.0 mg base

calibrated powder

M-981-HC-10

10 mg

powder

M-981-HC-50

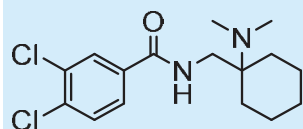
50 mg

powder

M-981-HC-100

100 mg

powder



AH-7921.HCl

C₁₆H₂₂Cl₂N₂O.HCl

M.W.: 329.27 + 36.46

AH-1571-HC-1LM

1.0 mg base/1 ml

calibrated solution in
methanol

AH-1571-HC-1

1.0 mg base

calibrated powder

AH-1571-HC-10

10 mg

powder

AH-1571-HC-50

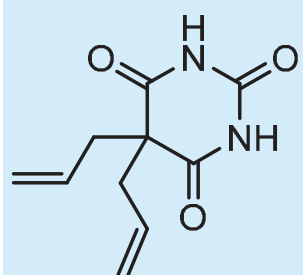
50 mg

powder

AH-1571-HC-100

100 mg

powder



Allobarbital

C₁₀H₁₂N₂O₃

M.W.: 208.21

ALB-403-FA-1LM

1.0 mg acid/1 ml

calibrated solution in
methanol

ALB-403-FA-1

1.0 mg acid

calibrated powder

ALB-403-FA-10

10 mg

powder

ALB-403-FA-50

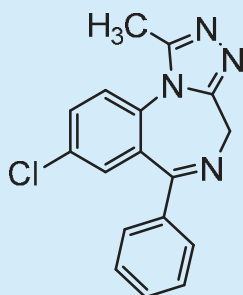
50 mg

powder

ALB-403-FA-100

100 mg

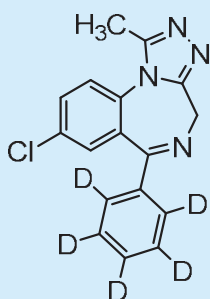
powder



Alprazolam

$C_{17}H_{13}ClN_4$ M.W.: 308.77

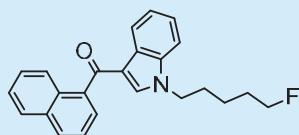
ALP-118-FB-1LM	1.0 mg base/1 ml	calibrated solution in methanol
ALP-118-FB-1	1.0 mg base	calibrated powder
ALP-118-FB-10	10 mg	powder
ALP-118-FB-50	50 mg	powder
ALP-118-FB-100	100 mg	powder



Alprazolam-D₅

$C_{17}H_8D_5ClN_4$ M.W.: 313.80

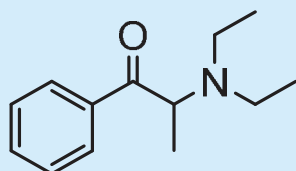
ALP-908-FB-0.1LM	0.1 mg base/1 ml	calibrated solution in methanol
ALP-908-FB-1LM	1.0 mg base/1 ml	calibrated solution in methanol
ALP-908-FB-1	1.0 mg base	calibrated powder
ALP-908-FB-10	10 mg	powder
ALP-908-FB-50	50 mg	powder
ALP-908-FB-100	100 mg	powder



AM-2201

$C_{24}H_{22}FNO$ M.W.: 359.44

JWH-1503-0.1LM	0.1 mg/1 ml	calibrated solution in methanol
JWH-1503-1LM	1.0 mg/1 ml	calibrated solution in methanol
JWH-1503-1	1.0 mg	calibrated powder
JWH-1503-10LM	10 mg/1 ml	solution in methanol
JWH-1503-50LM	50 mg/1 ml	solution in methanol
JWH-1503-100LM	100 mg/1 ml	solution in methanol

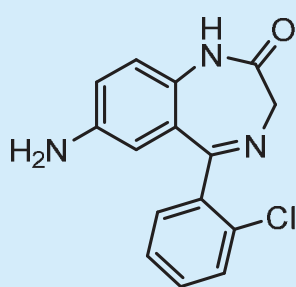


Amfepramone.HCl

Synonym : Diethylpropion.HCl

$C_{13}H_{19}NO.HCl$ M.W. : 205.30+36.46

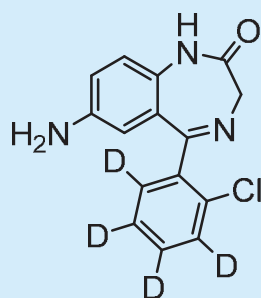
AMF-1286-HC-1LE	1.0 mg base/1 ml	calibrated solution in ethanol
AMF-1286-HC-1	1.0 mg base	calibrated powder
AMF-1286-HC-10	10 mg	powder
AMF-1286-HC-50	50 mg	powder
AMF-1286-HC-100	100 mg	powder



7-Aminoclonazepam

$C_{15}H_{12}ClN_3O$ M.W. : 285.73

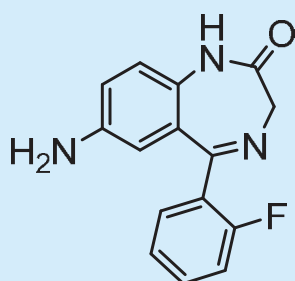
CLO-106-FB-0.1LA	0.1 mg base/1 ml	calibrated solution in acetonitrile
CLO-106-FB-1LA	1.0 mg base/1 ml	calibrated solution in acetonitrile
CLO-106-FB-1	1.0 mg base	calibrated powder
CLO-106-FB-10	10 mg	powder
CLO-106-FB-50	50 mg	powder
CLO-106-FB-100	100 mg	powder



7-Aminoclonazepam-D₄

$C_{15}H_8D_4ClN_3O$ M.W. : 289.70

CLO-926-FB-0.1LA	0.1 mg base/1 ml	calibrated solution in acetonitrile
CLO-926-FB-1LA	1.0 mg base/1 ml	calibrated solution in acetonitrile
CLO-926-FB-1	1.0 mg base	calibrated powder
CLO-926-FB-10	10 mg	powder
CLO-926-FB-50	50 mg	powder
CLO-926-FB-100	100 mg	powder

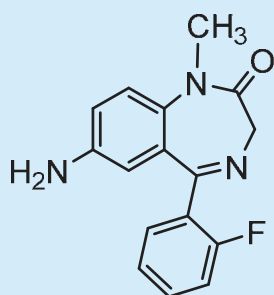


7-Aminodesmethyflunitrazepam

$C_{15}H_{12}FN_3O$

M.W.: 269.28

FLU-125-FB-1LA	1.0 mg base/1 ml	calibrated solution in acetonitrile
FLU-125-FB-1	1.0 mg base	calibrated powder
FLU-125-FB-10	10 mg	powder
FLU-125-FB-50	50 mg	powder
FLU-125-FB-100	100 mg	powder

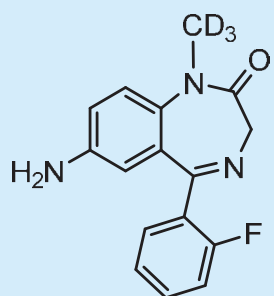


7-Aminoflunitrazepam

$C_{16}H_{14}FN_3O$

M.W.: 283.31

FLU-74-FB-1LA	1.0 mg base/1 ml	calibrated solution in acetonitrile
FLU-74-FB-1	1.0 mg base	calibrated powder
FLU-74-FB-10	10 mg	powder
FLU-74-FB-50	50 mg	powder
FLU-74-FB-100	100 mg	powder

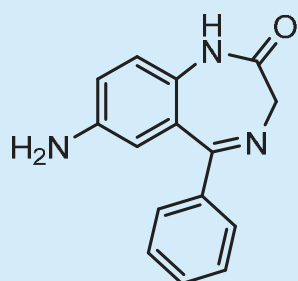


7-Aminoflunitrazepam-D₃

$C_{16}H_{11}D_3FN_3O$

M.W.: 286.33

FLU-75-FB-0.1LA	0.1 mg base/1 ml	calibrated solution in acetonitrile
FLU-75-FB-1LA	1.0 mg base/1 ml	calibrated solution in acetonitrile
FLU-75-FB-1	1.0 mg base	calibrated powder
FLU-75-FB-10	10 mg	powder
FLU-75-FB-50	50 mg	powder
FLU-75-FB-100	100 mg	powder

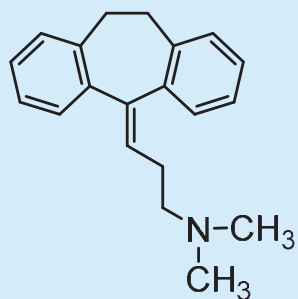


7-Aminonitrazepam

$C_{15}H_{13}N_3O$

M.W.: 251.29

NIT-113-FB-0.1LA	0.1 mg base/1 ml	calibrated solution in acetonitrile
NIT-113-FB-1LA	1.0 mg base/1 ml	calibrated solution in acetonitrile
NIT-113-FB-1	1.0 mg base	calibrated powder
NIT-113-FB-10	10 mg	powder
NIT-113-FB-50	50 mg	powder
NIT-113-FB-100	100 mg	powder

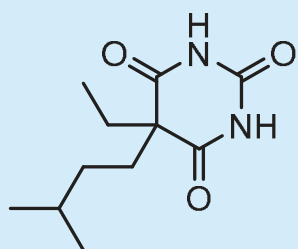


Amitriptyline.HCl

$C_{20}H_{23}N.HCl$

M.W.: 277.40+36.46

AMI-754-HC-1LM	1.0 mg base/1 ml	calibrated solution in methanol
AMI-754-HC-1	1.0 mg base	calibrated powder
AMI-754-HC-10	10 mg	powder
AMI-754-HC-50	50 mg	powder
AMI-754-HC-100	100 mg	powder

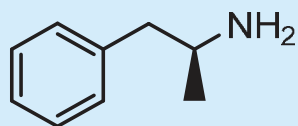


Amobarbital

$C_{11}H_{18}N_2O_3$

M.W.: 226.27

AMB-400-FA-1LM	1.0 mg acid/1 ml	calibrated solution in methanol
AMB-400-FA-1	1.0 mg acid	calibrated powder
AMB-400-FA-10	10 mg	powder
AMB-400-FA-50	50 mg	powder
AMB-400-FA-100	100 mg	powder

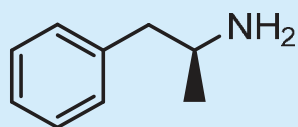


d-Amphetamine.HCl

$C_9H_{13}N.HCl$

M.W.: 135.21 + 36.46

AMP-96-HC-1LM	1.0 mg base/1 ml	calibrated solution in methanol
AMP-96-HC-1	1.0 mg base	calibrated powder
AMP-96-HC-10	10 mg	powder
AMP-96-HC-50	50 mg	powder
AMP-96-HC-100	100 mg	powder

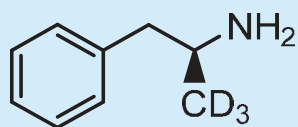


d-Amphetamine.sulfate

$(C_9H_{13}N)_2.H_2SO_4$

M.W.: 270.42 + 98.08

AMP-96-SU-1LM	1.0 mg base/1 ml	calibrated solution in methanol
AMP-96-SU-1	1.0 mg base	calibrated powder
AMP-96-SU-10	10 mg	powder
AMP-96-SU-50	50 mg	powder
AMP-96-SU-100	100 mg	powder

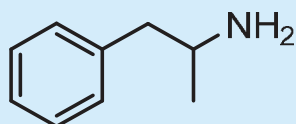


d-Amphetamine-D₃.sulfate

$(C_9H_{10}D_3N)_2.H_2SO_4$

M.W.: 276.42 + 98.08

AMP-893-SU-0.1LM	0.1 mg base/1 ml	calibrated solution in methanol
AMP-893-SU-1LM	1.0 mg base/1 ml	calibrated solution in methanol
AMP-893-SU-1	1.0 mg base	calibrated powder
AMP-893-SU-10	10 mg	powder
AMP-893-SU-50	50 mg	powder
AMP-893-SU-100	100 mg	powder

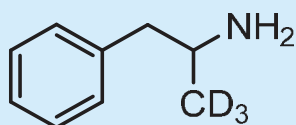


d,l-Amphetamine.HCl

$C_9H_{13}N.HCl$

M. W.: 135.21+36.46

AMP-95-HC-1LM	1.0 mg base/1 ml	calibrated solution in methanol
AMP-95-HC-1	1.0 mg base	calibrated powder
AMP-95-HC-10	10 mg	powder
AMP-95-HC-50	50 mg	powder
AMP-95-HC-100	100 mg	powder

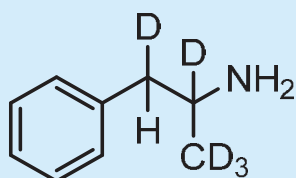


d,l-Amphetamine-D₃.HCl

$C_9H_{10}D_3N.HCl$

M. W.: 138.22+36.46

AMP-1139-HC-0.1LM	0.1 mg base/1 ml	calibrated solution in methanol
AMP-1139-HC-1LM	1.0 mg base/1 ml	calibrated solution in methanol
AMP-1139-HC-1	1.0 mg base	calibrated powder
AMP-1139-HC-10	10 mg	powder
AMP-1139-HC-50	50 mg	powder
AMP-1139-HC-100	100 mg	powder

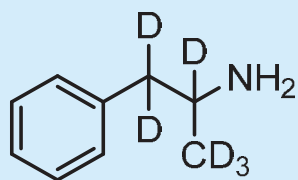


d,l-Amphetamine-D₅.HCl (side chain)

$C_9H_8D_5N.HCl$

M. W.: 140.24+36.46

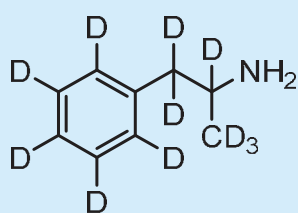
AMP-829-HC-0.1LM	0.1 mg base/1 ml	calibrated solution in methanol
AMP-829-HC-1LM	1.0 mg base/1 ml	calibrated solution in methanol
AMP-829-HC-1	1.0 mg base	calibrated powder
AMP-829-HC-10	10 mg	powder
AMP-829-HC-50	50 mg	powder
AMP-829-HC-100	100 mg	powder



d,l-Amphetamine-D₆.HCl

$C_9H_7D_6N.HCl$ M.W.: 141.24+36.46

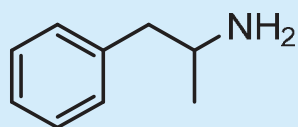
AMP-976-HC-0.1LM	0.1 mg base/1 ml	calibrated solution in methanol
AMP-976-HC-1LM	1.0 mg base/1 ml	calibrated solution in methanol
AMP-976-HC-1	1.0 mg base	calibrated powder
AMP-976-HC-10	10 mg	powder
AMP-976-HC-50	50 mg	powder
AMP-976-HC-100	100 mg	powder



d,l-Amphetamine-D₁₁.HCl

$C_9H_2D_{11}N.HCl$ M.W.: 146.27+36.46

AMP-574-HC-0.1LM	0.1 mg base/1 ml	calibrated solution in methanol
AMP-574-HC-1LM	1.0 mg base/1 ml	calibrated solution in methanol
AMP-574-HC-1	1.0 mg base	calibrated powder
AMP-574-HC-10	10 mg	powder
AMP-574-HC-50	50 mg	powder
AMP-574-HC-100	100 mg	powder



d,l-Amphetamine.sulfate

$(C_9H_{13}N)_2.H_2SO_4$ M.W.: 270.42+98.08

AMP-95-SU-1LM	1.0 mg base/1 ml	calibrated solution in methanol
AMP-95-SU-1	1.0 mg base	calibrated powder
AMP-95-SU-10	10 mg	powder
AMP-95-SU-50	50 mg	powder
AMP-95-SU-100	100 mg	powder